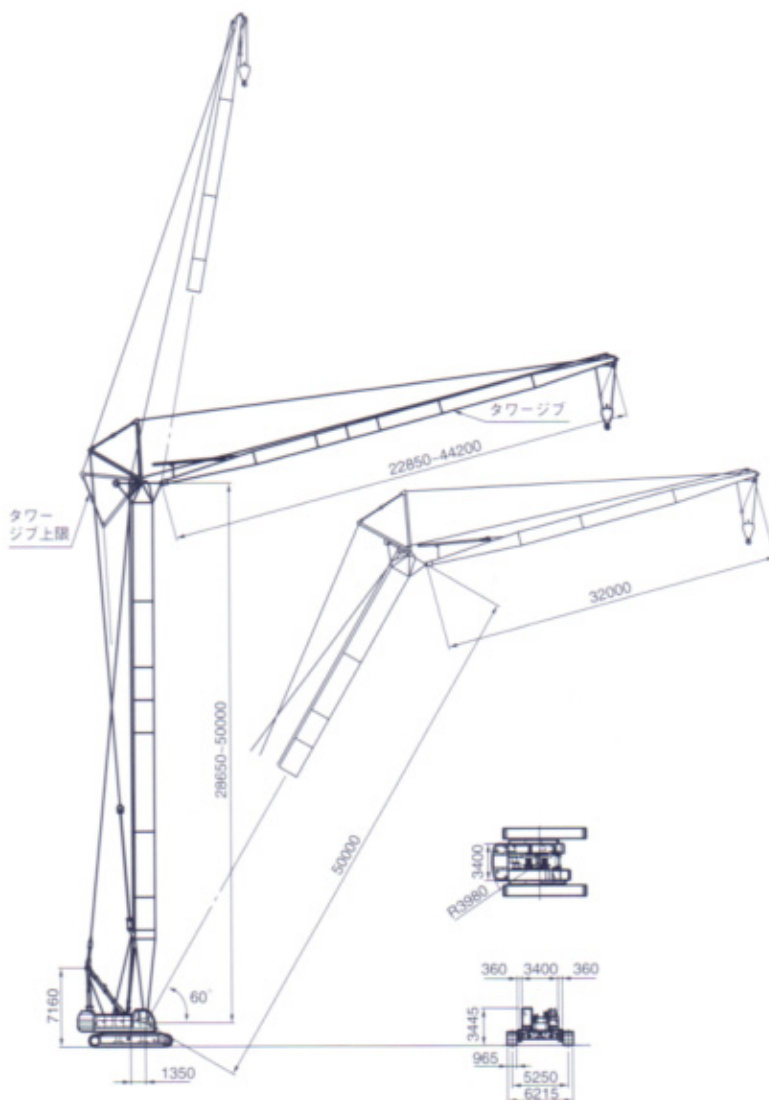


# 主要寸法全体図

## ■ラフィングタワークレーン

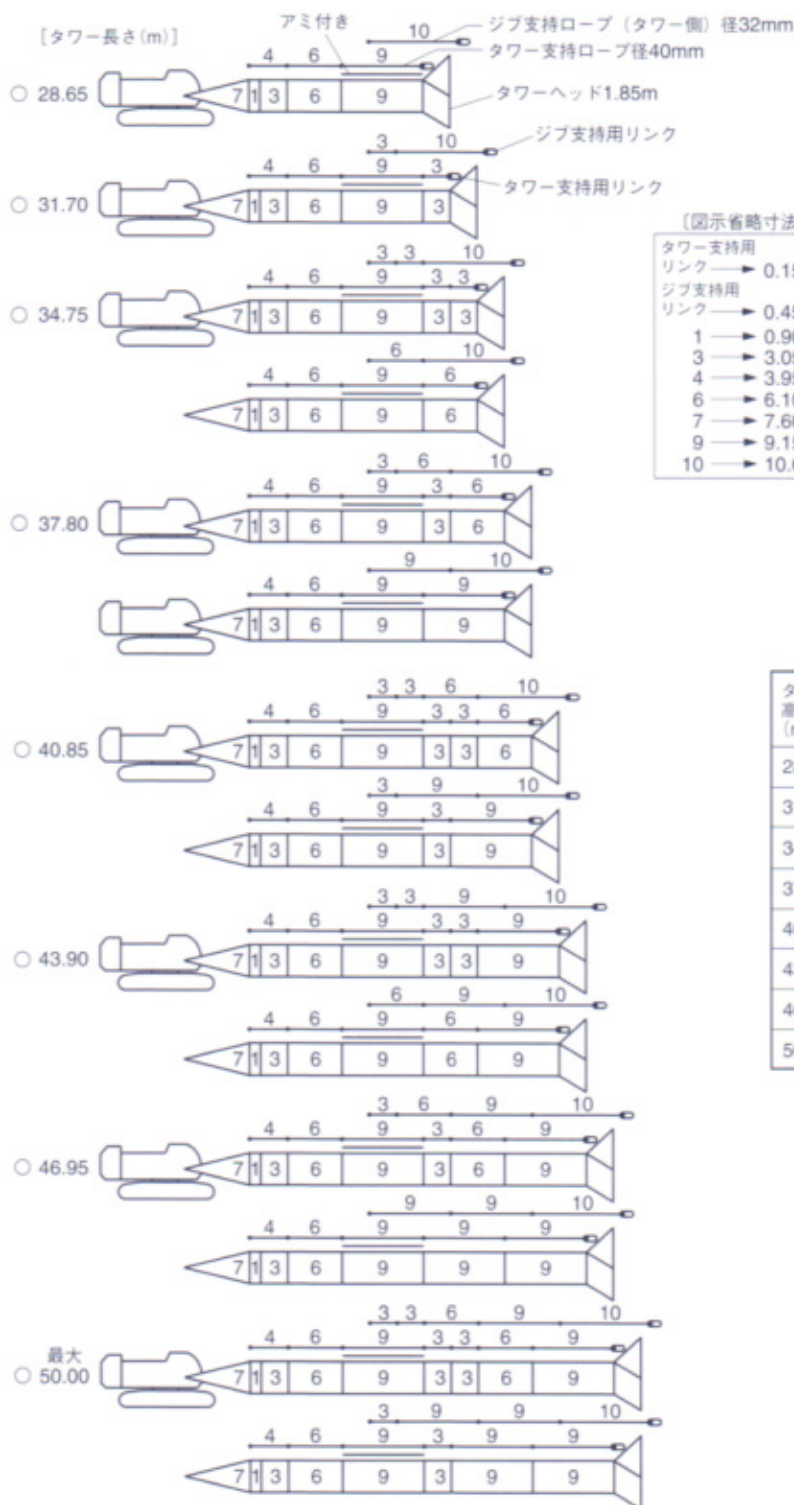


## ■主要仕様

### SC1000-2S全油圧式クローラクレーン(ラフィングタワー)

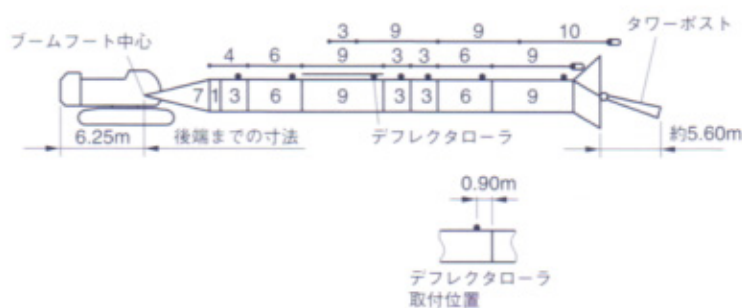
最大吊上げ能力	20.0 ton×14.0m
タワー高さ	28.65m~50.00m
タワージブ長さ	22.85m~44.20m
フロントドラムロープ巻上/下速度	90~2.0m/min
タワージブ巻上/下ロープ速度	45~2.0m/min
タワー巻上/下ロープ速度	46~2.0m/min
旋回速度 (定速旋回制御付切替式)	2.1/1.5/0.6/0.3 min <sup>-1</sup>
走行速度	1.4/1.0 km/h
エンジン型式	三菱6D24-T型ディーゼルエンジン
定格出力	184 kW/2050 min <sup>-1</sup>
登坂能力	17° (30%)
平均接地圧 (基本ブーム、810mmシュー付)	94.6 kPa
作業時質量 (25.90mタワー+19.10mジブ、15tフック付)	約123.3 ton

# タワー・ジブおよび支持ロープの構成



○ : 90° ~ 60° ラフティング可能  
 ○ : 90° ~ 70° ラフティング可能  
 × : 使用不可

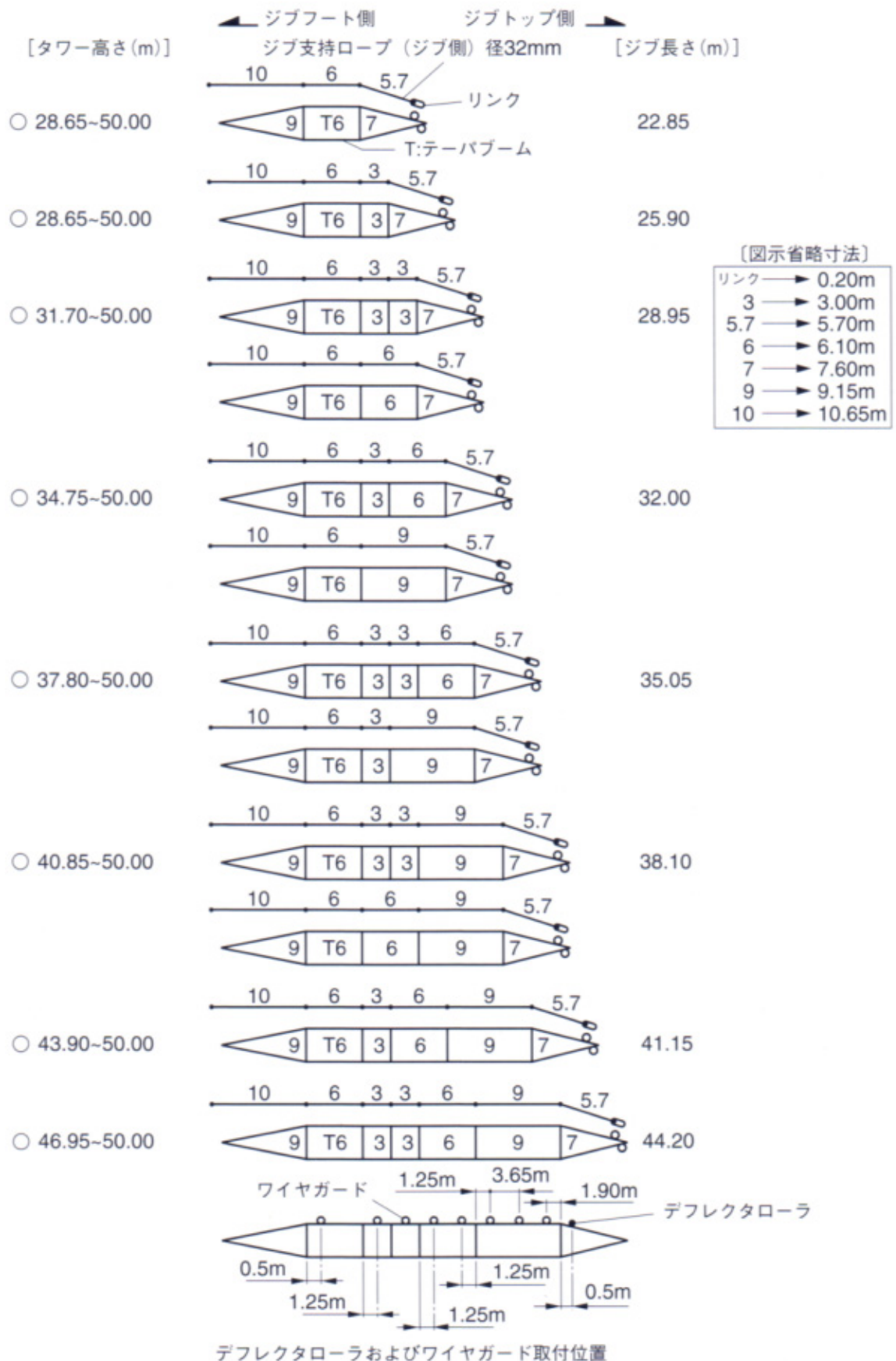
タワー 高さ (m)	ジブ長さ (m)							
	22.85	25.90	28.95	32.00	35.05	38.10	41.15	44.20
28.65	○	○	×	×	×	×	×	×
31.70	○	○	○	×	×	×	×	×
34.75	○	○	○	○	×	×	×	×
37.80	○	○	○	○	○	×	×	×
40.85	○	○	○	○	○	○	×	×
43.90	○	○	○	○	○	○	○	×
46.95	○	○	○	○	○	○	○	○
50.00	○	○	○	○	○	○	○	○



○印の付いた構成は、そのアタッチメント長さで購入する場合の推奨ブーム構成を示します。

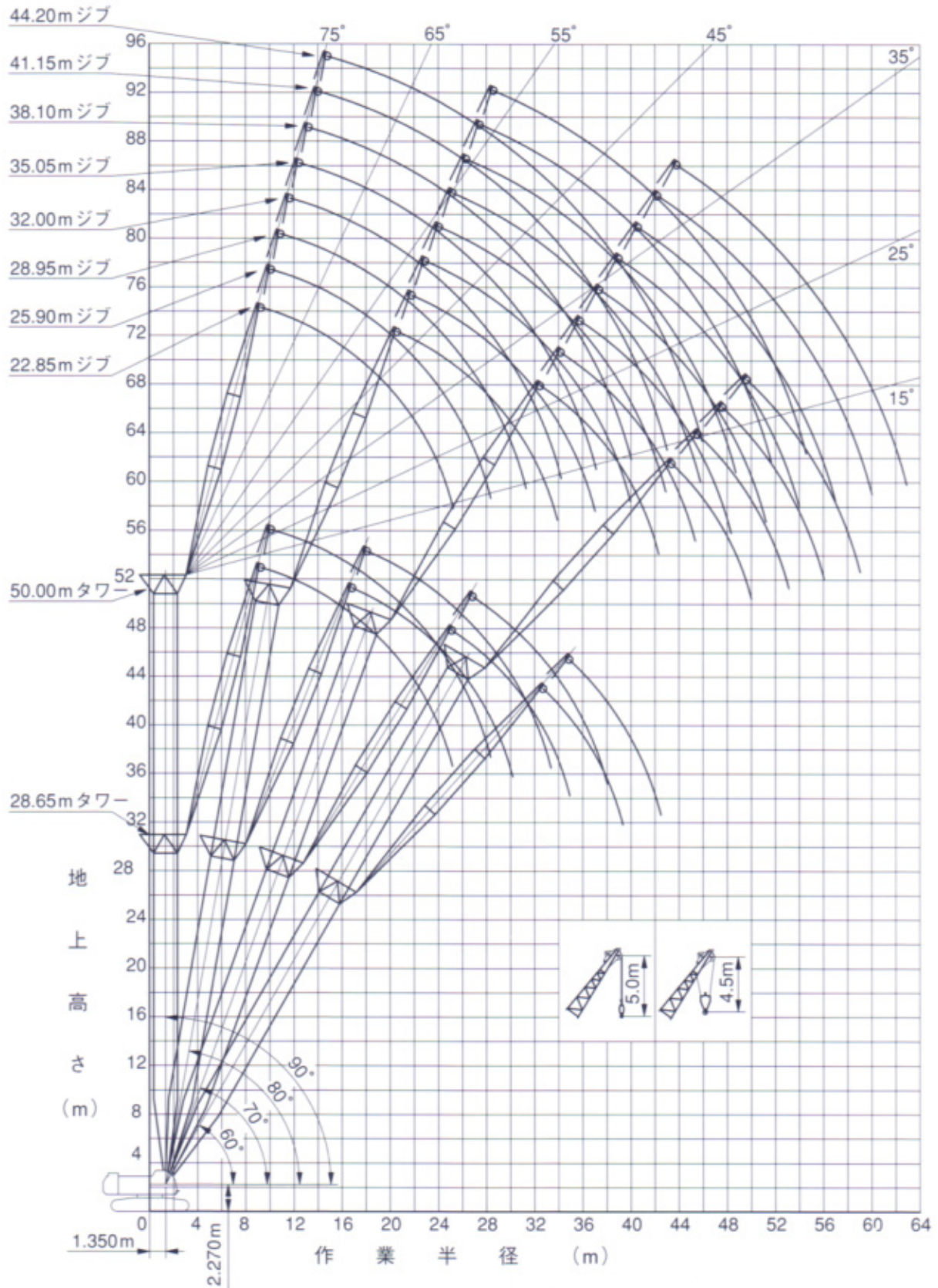
# タワー・ジブおよび支持ロープの構成

## 2 ジブおよび支持ロープの構成



・○印の付いた構成は、そのアタッチメント長さで購入する場合の推奨ブーム構成を示します。

# 作業範囲図



# 定格総荷重表

## ■28.65mタワー

(単位: t)

作業半径 (m)	タワージブ長さ (m)															
	22.85 タワー角度 (°)								25.90 タワー角度 (°)							
	90		80		70		60		90		80		70		60	
	2本掛	1本掛	2本掛	1本掛	2本掛	1本掛	2本掛	1本掛	2本掛	1本掛	2本掛	1本掛	2本掛	1本掛	2本掛	1本掛
9.2	20.0	11.0/9.7														
10.0	20.0	11.0							18.6	11.0/10.5						
12.0	20.0	11.0							18.6	11.0						
14.0	20.0	11.0							18.6	11.0						
15.0	18.5	11.0							18.2	11.0						
16.0	17.2	11.0	16.5/16.7	11.0/17.3					17.0	11.0	15.0/17.9					
18.0	15.1	11.0	15.1	11.0					14.9	11.0	14.9	11.0/18.4				
20.0	13.5	11.0	13.5	11.0					13.3	11.0	13.3	11.0				
22.0	12.3	11.0	12.3	11.0					12.0	11.0	12.0	11.0				
24.0	10.2	10.2	11.2	11.0	10.8/24.9	10.5/25.6			11.0	11.0	11.0	11.0				
26.0	8.7/24.6	8.7/25.6	10.3	10.3	10.3	10.3			10.1	10.1	10.1	10.1	9.9/26.5	9.6/27.2		
28.0			9.6	9.6	9.6	9.6			7.6/27.5	7.6	9.3	9.3	9.3	9.3		
30.0			9.2/29.5	9.0	9.0	9.0			7.6/28.5	8.7	8.7	8.7	8.7	8.7		
32.0				8.9/30.5	8.4	8.4	8.2/32.3	8.0/33.1			8.1	8.1	8.1	8.1		
34.0					7.9	7.9	7.9	7.9			8.0/32.5	7.7/33.5	7.6	7.6	7.5/34.4	7.4/35.1
36.0					7.8/34.3	7.6/35.3	7.4	7.4					7.2	7.2	7.2	7.2
38.0							7.0	7.0					7.0/37.2	6.8	6.8	6.8
40.0							6.9/38.7	6.7/39.6						6.8/38.2	6.4	6.4
42.0															6.1/41.6	6.0
44.0																5.9/42.6

## ■31.70mタワー

作業半径 (m)	タワージブ長さ (m)															
	22.85 タワー角度 (°)								25.90 タワー角度 (°)							
	90		80		70		60		90		80		70		60	
	2本掛	1本掛	2本掛	1本掛	2本掛	1本掛	2本掛	1本掛	2本掛	1本掛	2本掛	1本掛	2本掛	1本掛	2本掛	1本掛
9.2	20.0	11.0/9.7														
10.0	20.0	11.0							18.6	11.0/10.5						
12.0	20.0	11.0							18.6	11.0						
14.0	19.9	11.0							18.6	11.0						
15.0	18.4	11.0							18.2	11.0						
16.0	17.1	11.0	15.8/17.2	11.0/17.8					16.9	11.0						
18.0	15.0	11.0	15.0	11.0					14.8	11.0	14.5/18.4	11.0/19.0				
20.0	13.4	11.0	13.4	11.0					13.2	11.0	13.2	11.0				
22.0	12.1	11.0	12.1	11.0					11.9	11.0	11.9	11.0				
24.0	10.3	10.3	11.0	11.0	10.1/25.9				10.8	10.8	10.8	10.8				
26.0	8.8/24.6	8.8/25.6	10.1	10.1	10.1	9.9/26.6			9.9	9.9	9.9	9.9	9.4/27.5			
28.0			9.4	9.4	9.4	9.4			7.8/27.5	7.8	9.2	9.2	9.2	9.1/28.2		
30.0			8.7	8.7	8.7	8.7			7.8/28.5	8.5	8.5	8.5	8.5			
32.0				8.5/31.0	8.2	8.2	7.8/33.8				7.9	7.9	7.9	7.9		
34.0					7.7	7.7	7.7	7.6/34.6			7.7/33.0	7.4	7.4	7.4	7.0/35.9	
36.0					7.4/35.3	7.2	7.2	7.2					7.0	7.0	7.0	6.8/36.7
38.0						7.1/36.3	6.8	6.8					6.5	6.5	6.5	6.5
40.0							6.4	6.4					6.5/38.2	6.3/39.2	6.2	6.2
42.0							6.4/40.2	6.2/41.2							5.8	5.8
44.0															5.6/43.1	5.5
46.0																5.4/44.1

作業半径 (m)	タワージブ長さ (m)							
	28.95 タワー角度 (°)							
	90		80		70		60	
	2本掛	1本掛	2本掛	1本掛	2本掛	1本掛	2本掛	1本掛
9.2								
10.0	15.4/10.8	11.0/11.3						
12.0	15.4	11.0						
14.0	15.4	11.0						
15.0	15.4	11.0						
16.0	15.4	11.0						
18.0	14.6	11.0	13.4/19.5					
20.0	13.0	11.0	13.0	11.0/20.1				
22.0	11.7	11.0	11.7	11.7				
24.0	10.6	10.6	10.6	10.6				
26.0	9.7	9.7	9.7	9.7				
28.0	9.0	9.0	9.0	9.0	8.6/29.1	8.4/29.8		
30.0	7.4	7.4	8.3	8.3	8.3	8.3		
32.0	6.8/30.4	6.8/31.4	7.7	7.7	7.7	7.7		
34.0			7.2	7.2	7.2	7.2		
36.0			6.8/35.9	6.8	6.8	6.8	6.4/37.9	
38.0				6.6/36.9	6.4	6.4	6.4	6.3/38.7
40.0					6.0	6.0	6.0	6.0
42.0					5.8/41.2	5.6	5.6	5.6
44.0						5.6/42.2	5.3	5.3
46.0							5.0	5.0
48.0							5.0/46.1	4.8/47.1

# 定格総荷重表

## ■34.75mタワー

(単位：t)

作業半径 (m)	タワージブ長さ (m)															
	22.85								25.90							
	タワー角度 (°)								タワー角度 (°)							
	90		80		70		60		90		80		70		60	
2本掛	1本掛	2本掛	1本掛	2本掛	1本掛	2本掛	1本掛	2本掛	1本掛	2本掛	1本掛	2本掛	1本掛	2本掛	1本掛	
9.2	20.0	11.0/9.7														
10.0	20.0	11.0							18.6	11.0/10.5						
12.0	20.0	11.0							18.6	11.0						
14.0	19.8	11.0							18.6	11.0						
15.0	18.3	11.0							18.1	11.0						
16.0	17.0	11.0	15.1/17.8						16.8	11.0						
18.0	14.9	11.0	14.9	11.0/18.3					14.7	11.0	13.9/18.9	11.0/19.5				
20.0	13.2	11.0	13.2	11.0					13.0	11.0	13.0	11.0				
22.0	11.9	11.0	11.9	11.0					11.7	11.0	11.7	11.0				
24.0	10.4	10.4	10.9	10.9					10.7	10.7	10.7	10.7				
26.0	9.0/24.6	9.0/25.6	10.0	10.0	9.6/27.0	9.4/27.6			9.8	9.8	9.8	9.8				
28.0			9.2	9.2	9.2	9.2			7.9/27.5	7.9	9.0	9.0	8.8/28.6	8.5/29.3		
30.0			8.5	8.5	8.5	8.5			7.9/28.5	8.3	8.3	8.3	8.3			
32.0			8.3/30.6	8.0/31.6	7.9	7.9				7.7	7.7	7.7	7.7			
34.0					7.4	7.4	7.1/35.4			7.3/33.5	7.2	7.2	7.2			
36.0					6.9	6.9	6.9	6.9/36.2			7.1/34.5	6.8	6.8	6.5/37.4		
38.0					6.8/36.3	6.6/37.3	6.5	6.5				6.3	6.3	6.3	6.3/38.2	
40.0							6.1	6.1				6.0/39.3	5.9	5.9	5.9	
42.0							5.8/41.7	5.7					5.9/40.3	5.6	5.6	
44.0								5.6/42.7						5.2	5.2	
46.0														5.1/44.6	4.9/45.6	

作業半径 (m)	タワージブ長さ (m)															
	28.95								32.00							
	タワー角度 (°)								タワー角度 (°)							
	90		80		70		60		90		80		70		60	
2本掛	1本掛	2本掛	1本掛	2本掛	1本掛	2本掛	1本掛	2本掛	1本掛	2本掛	1本掛	2本掛	1本掛	2本掛	1本掛	
9.2																
10.0	15.4/10.8	11.0/11.3								14.6/11.6						
12.0	15.4	11.0								14.6	11.0/12.1					
14.0	15.4	11.0								14.6	11.0					
15.0	15.4	11.0								14.6	11.0					
16.0	15.4	11.0								14.6	11.0					
18.0	14.5	11.0								14.3	11.0					
20.0	12.9	11.0	12.8/20.1	11.0/20.6						12.7	11.0	11.9/21.2	11.0/21.8			
22.0	11.6	11.0	11.6	11.0						11.4	11.0	11.4	11.0			
24.0	10.5	10.5	10.5	10.5						10.4	10.4	10.4	10.4			
26.0	9.6	9.6	9.6	9.6						9.5	9.5	9.5	9.5			
28.0	8.8	8.8	8.8	8.8						8.7	8.7	8.7	8.7			
30.0	7.5	7.5	8.2	8.2	8.1/30.2	7.9/30.9				8.0	8.0	8.0	8.0	7.5/31.8		
32.0	6.9/30.4	6.9/31.4	7.6	7.6	7.6	7.6				7.4	7.4	7.4	7.4	7.4	7.3/32.5	
34.0			7.0	7.0	7.0	7.0				6.0/33.4	6.0	6.9	6.9	6.9	6.9	
36.0			6.6	6.6	6.6	6.6				6.0/34.4	6.5	6.5	6.5	6.5	6.5	
38.0			6.5/36.5	6.2/37.5	6.1	6.1	5.9/39.4				6.0	6.0	6.0	6.0		
40.0					5.8	5.8	5.8	5.8/40.2			5.7/39.4	5.6	5.6	5.6	5.4/41.5	
42.0					5.4	5.4	5.4	5.4				5.5/40.4	5.3	5.3	5.3	5.2/42.3
44.0					5.4/42.2	5.2/43.2	5.0	5.0					4.9	4.9	4.9	4.9
46.0							4.7	4.7					4.7/45.2	4.6	4.6	4.6
48.0							4.5/47.6	4.4						4.6/46.2	4.3	4.3
50.0								4.3/48.6							4.0	4.0
52.0															3.9/50.5	3.8/51.5

# 定格総荷重表

## ■37.80mタワー

作業半径 (m)	タワージブ長さ (m)															
	22.85 タワー角度 (°)							25.90 タワー角度 (°)								
	90		80		70		60		90		80		70		60	
	2本掛	1本掛	2本掛	1本掛	2本掛	1本掛	2本掛	1本掛	2本掛	1本掛	2本掛	1本掛	2本掛	1本掛	2本掛	1本掛
9.2	20.0	11.0/9.7														
10.0	20.0	11.0							18.6	11.0/10.5						
12.0	20.0	11.0							18.6	11.0						
14.0	19.8	11.0							18.6	11.0						
15.0	18.2	11.0							18.0	11.0						
16.0	16.9	11.0							16.7	11.0						
18.0	14.8	11.0	14.5/18.3	11.0/18.9					14.6	11.0	13.4/19.4					
20.0	13.1	11.0	13.1	11.0					12.9	11.0	12.9	11.0				
22.0	11.8	11.0	11.8	11.0					11.6	11.0	11.6	11.0				
24.0	10.5	10.5	10.7	10.7					10.6	10.6	10.6	10.6				
26.0	9.1/24.6	9.1/25.6	9.8	9.8					9.7	9.7	9.7	9.7				
28.0			9.1	9.1	9.1	6.9/28.7			8.0/27.5	8.0	8.9	8.9	8.3/29.6			
30.0			8.4	8.4	8.4	8.4			8.0/28.5	8.2	8.2	8.2	8.1/30.3			
32.0			8.1/31.1	7.8	7.8	7.8				7.6	7.6	7.6	7.6			
34.0				7.8/32.1	7.3	7.3				7.1	7.1	7.1	7.1			
36.0					6.8	6.8	6.5/36.9	6.4/37.7			6.9/35.0	6.6	6.6			
38.0					6.5/37.4	6.3	6.3	6.3				6.2	6.2	5.9/38.9	5.7/39.7	
40.0						6.2/38.4	5.9	5.9				5.8	5.8	5.7	5.7	
42.0							5.5	5.5				5.7/40.3	5.5/41.3	5.3	5.3	
44.0							5.3/43.2	5.2						5.0	5.0	
46.0								5.2/44.2						4.7	4.7	
48.0														4.7/46.2	4.5/47.2	

# 定格総荷重表

(単位:t)

作業半径 (m)	タワージブ長さ (m)															
	28.95							32.00								
	タワー角度 (°)															
	90		80		70		60		90		80		70		60	
2本掛	1本掛	2本掛	1本掛	2本掛	1本掛	2本掛	1本掛	2本掛	1本掛	2本掛	1本掛	2本掛	1本掛	2本掛	1本掛	
9.2																
10.0	15.4/10.8	11.0/11.3							14.6/11.6							
12.0	15.4	11.0							14.6	11.0/12.1						
14.0	15.4	11.0							14.6	11.0						
15.0	15.4	11.0							14.6	11.0						
16.0	15.4	11.0							14.6	11.0						
18.0	14.4	11.0							14.3	11.0						
20.0	12.8	11.0	12.4/20.6	11.0/21.2					12.6	11.0	11.5/21.7					
22.0	11.5	11.0	11.5	11.0					11.3	11.0	11.3	11.0/22.3				
24.0	10.4	10.4	10.4	10.4					10.3	10.3	10.3	10.3				
26.0	9.5	9.5	9.5	9.5					9.4	9.4	9.4	9.4				
28.0	8.7	8.7	8.7	8.7					8.6	8.6	8.6	8.6				
30.0	7.6	7.6	8.0	8.0	7.7/31.2	7.5/31.9			7.9	7.9	7.9	7.9				
32.0	7.0/30.4	7.0/31.4	7.5	7.5	7.5	7.5			7.4	7.4	7.4	7.4	7.2/32.8	7.0/33.5		
34.0			6.9	6.9	6.9	6.9			6.1/33.4	6.1	6.8	6.8	6.8	6.8		
36.0			6.5	6.5	6.5	6.5				6.1/34.4	6.4	6.4	6.4	6.4		
38.0			6.3/37.0	6.0	6.0	6.0					5.9	5.9	5.9	5.9		
40.0					5.6	5.6	5.4/41.0	5.2/41.8			5.5/39.9	5.5	5.5	5.5		
42.0					5.3	5.3	5.2	5.2								
44.0					5.0/43.3	4.9	4.9	4.9			5.4/40.9	5.2	5.2	4.9/43.0	4.7/43.8	
46.0						4.9/44.3	4.6	4.6					4.8	4.8	4.7	4.7
48.0							4.3	4.3					4.5	4.5	4.5	4.5
50.0							4.1/49.1	4.0					4.5/46.2	4.3/47.2	4.2	4.2
52.0									4.0/50.1						3.9	3.9
54.0															3.6	3.6
54.0															3.6/52.1	3.5/53.1

作業半径 (m)	タワージブ長さ (m)							
	35.05							
	タワー角度 (°)							
	90		80		70		60	
2本掛	1本掛	2本掛	1本掛	2本掛	1本掛	2本掛	1本掛	
9.2								
10.0								
12.0	12.5/12.4	11.0/12.9						
14.0	12.5	11.0						
15.0	12.5	11.0						
16.0	12.5	11.0						
18.0	12.5	11.0						
20.0	12.5	11.0						
22.0	11.2	11.0	10.7/22.9	10.4/23.4				
24.0	10.1	10.1	10.1	10.1				
26.0	9.2	9.2	9.2	9.2				
28.0	8.5	8.5	8.5	8.5				
30.0	7.8	7.8	7.8	7.8				
32.0	7.2	7.2	7.2	7.2				
34.0	6.7	6.7	6.7	6.7	6.6/34.5	6.4/35.1		
36.0	5.3	5.3	6.2	6.2	6.2	6.2		
38.0	5.3/36.3	5.3/37.3	5.8	5.8	5.8	5.8		
40.0			5.4	5.4	5.4	5.4		
42.0			5.0	5.0	5.0	5.0		
44.0			4.9/42.9	4.7/43.9	4.7	4.7	4.4/45.0	4.3/45.8
46.0					4.4	4.4	4.3	4.3
48.0					4.1	4.1	4.0	4.0
50.0					3.9/49.2	3.8	3.8	3.8
52.0						3.8/50.2	3.5	3.5
54.0							3.2	3.2
56.0							3.1/55.0	3.0



# 定格総荷重表

## ■40.85mタワー

作業半径 (m)	タワージブ長さ (m)															
	22.85								25.90							
	タワー角度 (°)								タワー角度 (°)							
	90		80		70		60		90		80		70		60	
2本掛	1本掛	2本掛	1本掛	2本掛	1本掛	2本掛	1本掛	2本掛	1本掛	2本掛	1本掛	2本掛	1本掛	2本掛	1本掛	
9.2	17.5	11.0/9.7								16.0	11.0/10.5					
10.0	17.5	11.0								16.0	11.0					
12.0	17.5	11.0								16.0	11.0					
14.0	17.5	11.0								16.0	11.0					
15.0	17.5	11.0								16.0	11.0					
16.0	16.8	11.0								16.0	11.0					
18.0	14.7	11.0	14.0/18.8	11.0/19.4						14.5	11.0					
20.0	13.0	11.0	13.0	11.0						12.8	11.0	12.8	11.0/20.5			
22.0	11.7	11.0	11.7	11.0						11.5	11.0	11.5	11.0			
24.0	10.3	10.3	10.6	10.6						10.4	10.4	10.4	10.4			
26.0	9.1/24.6	9.1/25.6	9.7	9.7						9.5	9.5	9.5	9.5			
28.0			8.9	8.9	8.6/29.0	8.3/29.7				8.0/27.5	8.0	8.7	8.7			
30.0			8.2	8.2	8.2	8.2				8.0/28.5	8.0	8.0	7.8/30.7	7.6/31.3		
32.0			7.7/31.6	7.6	7.6	7.6					7.4	7.4	7.4	7.4		
34.0				7.5/32.6	7.1	7.1					6.9	6.9	6.9	6.9		
36.0					6.6	6.6					6.8/34.6	6.5/35.6	6.4	6.4		
38.0					6.1	6.1	5.8/38.4	5.7/39.2					6.0	6.0		
40.0					6.0/38.4	5.8/39.4	5.5	5.5					5.6	5.6	5.3/40.4	5.2/41.2
42.0							5.2	5.2					5.3/41.4	5.2	5.0	5.0
44.0							4.8	4.8						5.1/42.4	4.7	4.7
46.0							4.7/44.8	4.6/45.7							4.4	4.4
48.0															4.2/47.7	4.2
50.0																4.1/48.7

(単位: t)

作業半径 (m)	タワージブ長さ (m)															
	28.95								32.00							
	タワー角度 (°)								タワー角度 (°)							
	90		80		70		60		90		80		70		60	
2本掛	1本掛	2本掛	1本掛	2本掛	1本掛	2本掛	1本掛	2本掛	1本掛	2本掛	1本掛	2本掛	1本掛	2本掛	1本掛	
9.2																
10.0	15.0/10.8	11.0/11.3								14.0/11.6						
12.0	15.0	11.0								14.0	11.0/12.1					
14.0	15.0	11.0								14.0	11.0					
15.0	15.0	11.0								14.0	11.0					
16.0	15.0	11.0								14.0	11.0					
18.0	14.3	11.0								14.0	11.0					
20.0	12.7	11.0	12.0/21.1	11.0/21.7						12.6	11.0					
22.0	11.4	11.0	11.4	11.0						11.2	11.0	11.1/22.3	10.8/22.8			
24.0	10.3	10.3	10.3	10.3						10.2	10.2	10.2	10.2			
26.0	9.4	9.4	9.4	9.4						9.3	9.3	9.3	9.3			
28.0	8.6	8.6	8.6	8.6						8.5	8.5	8.5	8.5			
30.0	7.3	7.3	7.9	7.9						7.8	7.8	7.8	7.8			
32.0	6.7/30.4	6.7/31.4	7.3	7.3	7.2/32.3	7.1/33.0				7.2	7.2	7.2	7.2	7.0/33.9		
34.0			6.8	6.8	6.8	6.8				5.8/33.4	5.8	6.7	6.7	6.7	6.6/34.6	
36.0			6.3	6.3	6.3	6.3					5.8/34.4	6.2	6.2	6.2	6.2	
38.0			6.0/37.5	5.9	5.9	5.9						5.8	5.8	5.8	5.8	
40.0				5.8/38.5	5.5	5.5						5.4	5.4	5.4	5.4	
42.0					5.1	5.1	4.8/42.5	4.7/43.3			5.3/40.5	5.1/41.5	5.0	5.0		
44.0					4.7	4.7	4.5	4.5					4.7	4.7	4.3/44.5	4.2/45.3
46.0					4.7/44.3	4.5/45.3	4.3	4.3					4.3	4.3	4.1	4.1
48.0							4.0	4.0					4.1/47.3	4.0	3.9	3.9
50.0							3.8	3.8						4.0/48.3	3.7	3.7
52.0							3.7/50.6	3.5/51.6							3.4	3.4
54.0															3.2/53.6	3.2
56.0																3.1/54.6

# 定格総荷重表

作業半径 (m)	タワージブ長さ (m)																
	35.05								38.10								
	タワー角度 (°)								タワー角度 (°)								
	90		80		70		60		90		80		70		60		
2本掛	1本掛	2本掛	1本掛	2本掛	1本掛	2本掛	1本掛	2本掛	1本掛	2本掛	1本掛	2本掛	1本掛	2本掛	1本掛		
9.2																	
10.0																	
12.0	12.5/12.4	11.0/12.9							11.0/13.2	11.0/13.6							
14.0	12.5	11.0							11.0	11.0							
15.0	12.5	11.0							11.0	11.0							
16.0	12.5	11.0							11.0	11.0							
18.0	12.5	11.0							11.0	11.0							
20.0	12.4	11.0							11.0	11.0							
22.0	11.1	11.0	10.3/23.4						11.0	11.0							
24.0	10.0	10.0	10.0	10.0					10.0	10.0	9.8/24.5	9.5/25.1					
26.0	9.1	9.1	9.1	9.1					9.0	9.0	9.0	9.0					
28.0	8.4	8.4	8.4	8.4					8.3	8.3	8.3	8.3					
30.0	7.7	7.7	7.7	7.7					7.6	7.6	7.6	7.6					
32.0	7.1	7.1	7.1	7.1					7.0	7.0	7.0	7.0					
34.0	6.6	6.6	6.6	6.6	6.2/35.5				6.5	6.5	6.5	6.5					
36.0	5.4	5.4	6.1	6.1	6.1	6.1/36.2			6.1	6.1	6.1	6.1	5.8/37.1	5.6/37.8			
38.0	5.0/36.3	5.0/37.3	5.7	5.7	5.7	5.7			5.4	5.4	5.6	5.6	5.6	5.6			
40.0			5.3	5.3	5.3	5.3			4.3/39.3	4.3	5.3	5.3	5.3	5.3			
42.0			4.9	4.9	4.9	4.9				4.3/40.3	4.9	4.9	4.9	4.9			
44.0			4.7/43.4	4.6	4.6	4.6					4.6	4.6	4.6	4.6			
46.0				4.5/44.4	4.3	4.3	3.9/46.6	3.8/47.4			4.3	4.3	4.3	4.3			
48.0					4.0	4.0	3.7	3.7			4.3/46.3	4.1/47.3	4.0	4.0	3.5/48.6	3.4/49.4	
50.0					3.8	3.8	3.5	3.5					3.8	3.8	3.4	3.4	
52.0						3.8/50.2	3.6/51.2	3.3	3.3					3.5	3.5	3.2	3.2
54.0								3.1	3.1					3.4/53.1	3.3	3.0	3.0
56.0								2.8	2.8						3.3/54.1	2.8	2.8
58.0								2.7/56.5	2.6/57.5							2.5	2.5
60.0																2.4/59.5	2.3
62.0																	2.2/60.5

# 定格総荷重表

## ■43.90mタワー

(単位: t)

作業半径 (m)	タワージブ長さ (m)														
	22.85							25.90							
	タワー角度 (°)														
	90		80		70		60		90		80		70		60
2本掛	1本掛	2本掛	1本掛	2本掛	1本掛	2本掛	1本掛	2本掛	1本掛	2本掛	1本掛	2本掛	1本掛	2本掛	1本掛
9.2	17.5	11.0/9.7													
10.0	17.5	11.0							16.0	11.0/10.5					
12.0	17.5	11.0							16.0	11.0					
14.0	17.5	11.0							16.0	11.0					
15.0	17.5	11.0							16.0	11.0					
16.0	16.7	11.0							16.0	11.0					
18.0	14.6	11.0	13.4/19.4	11.0/19.9					14.4	11.0					
20.0	12.9	11.0	12.9	11.0					12.8	11.0	12.5/20.5	11.0/21.1			
22.0	11.6	11.0	11.6	11.0					11.4	11.0	11.4	11.0			
24.0	10.3	10.3	10.5	10.5					10.3	10.3	10.3	10.3			
26.0	8.8/24.6	8.8/25.6	9.6	9.6					9.4	9.4	9.4	9.4			
28.0			8.8	8.8					7.7/27.5	7.7	8.6	8.6			
30.0			8.1	8.1	8.1/30.1	7.9/30.8			7.7/28.5	8.0	8.0	7.5/31.7			
32.0			7.5	7.5	7.5	7.5				7.4	7.4	7.4	7.3/32.4		
34.0			7.4/32.2	7.1/33.2	6.9	6.9				6.8	6.8	6.8	6.8		
36.0					6.5	6.5				6.5/35.1	6.3	6.3	6.3		
38.0					6.0	6.0	5.2/39.9				6.3/36.1	5.9	5.9		
40.0					5.7/39.5	5.6	5.2	5.1/40.7				5.5	5.5		
42.0						5.5/40.5	4.9	4.9				5.1	5.1	4.7	4.6/42.8
44.0							4.6	4.6				5.0/42.4	4.8/43.4	4.4	4.4
46.0							4.3	4.3						4.1	4.1
48.0							4.2/46.3	4.2/47.3						3.9	3.9
50.0														3.7/49.2	3.7
52.0															3.7/50.2

作業半径 (m)	タワージブ長さ (m)														
	28.95							32.00							
	タワー角度 (°)														
	90		80		70		60		90		80		70		60
2本掛	1本掛	2本掛	1本掛	2本掛	1本掛	2本掛	1本掛	2本掛	1本掛	2本掛	1本掛	2本掛	1本掛	2本掛	1本掛
9.2															
10.0	15.0/10.8	11.0/11.3							14.0/11.6						
12.0	15.0	11.0							14.0	11.0/12.1					
14.0	15.0	11.0							14.0	11.0					
15.0	15.0	11.0							14.0	11.0					
16.0	15.0	11.0							14.0	11.0					
18.0	14.3	11.0							14.0	11.0					
20.0	12.6	11.0	11.6/21.6						12.5	11.0					
22.0	11.3	11.0	11.3	11.0/22.2					11.2	11.0	10.8/22.8	10.4/23.4			
24.0	10.2	10.2	10.2	10.2					10.1	10.1	10.1	10.1			
26.0	9.3	9.3	9.3	9.3					9.2	9.2	9.2	9.2			
28.0	8.5	8.5	8.5	8.5					8.4	8.4	8.4	8.4			
30.0	7.4	7.4	7.8	7.8					7.7	7.7	7.7	7.7			
32.0	6.7/30.4	6.7/31.4	7.2	7.2	6.9/33.3				7.1	7.1	7.1	7.1			
34.0			6.7	6.7	6.7	6.7			5.8/33.4	5.8	6.6	6.6	6.4/34.9	6.2/35.6	
36.0			6.2	6.2	6.2	6.2				5.8/34.4	6.2	6.2	6.2	6.2	
38.0			5.8	5.8	5.8	5.8					5.7	5.7	5.7	5.7	
40.0				5.6/39.0	5.4	5.4					5.3	5.3	5.3	5.3	
42.0					5.0	5.0					5.2/41.0	5.0	5.0	5.0	
44.0					4.6	4.6	4.2	4.1/44.8					4.6	4.6	
46.0					4.4/45.4	4.3	4.0	4.0					4.3	4.3	3.8
48.0						4.2/46.4	3.7	3.7					4.0	4.0	3.6
50.0							3.5	3.5					3.9/48.3	3.7/49.3	3.4
52.0							3.3	3.3							3.2
54.0							3.3/52.2	3.3/53.2							3.0
56.0															2.9
58.0															2.9/56.1

# 定格総荷重表

(単位: t)

作業半径 (m)	タワージブ長さ (m)															
	35.05								38.10							
	タワー角度 (°)								タワー角度 (°)							
	90		80		70		60		90		80		70		60	
2本掛	1本掛	2本掛	1本掛	2本掛	1本掛	2本掛	1本掛	2本掛	1本掛	2本掛	1本掛	2本掛	1本掛	2本掛	1本掛	
9.2																
10.0																
12.0	12.5/12.4	11.0/12.9							11.0/13.2	11.0/13.6						
14.0	12.5	11.0							11.0	11.0						
15.0	12.5	11.0							11.0	11.0						
16.0	12.5	11.0							11.0	11.0						
18.0	12.5	11.0							11.0	11.0						
20.0	12.4	11.0							11.0	11.0						
22.0	11.1	11.0	10.1/23.9						11.0	11.0						
24.0	10.0	10.0	10.0	9.8/24.5					9.9	9.9	9.4/25.1	9.2/25.6				
26.0	9.1	9.1	9.1	9.1					9.0	9.0	9.0	9.0				
28.0	8.3	8.3	8.3	8.3					8.3	8.3	8.3	8.3				
30.0	7.7	7.7	7.7	7.7					7.6	7.6	7.6	7.6				
32.0	7.1	7.1	7.1	7.1					7.0	7.0	7.0	7.0				
34.0	6.6	6.6	6.6	6.6					6.5	6.5	6.5	6.5				
36.0	5.4	5.4	6.1	6.1	6.0/36.5	5.9/37.2			6.1	6.1	6.1	6.1				
38.0	5.1/36.3	5.1/37.3	5.7	5.7	5.7	5.7			5.4	5.4	5.6	5.6	5.6/38.2	5.5/38.8		
40.0			5.3	5.3	5.3	5.3			4.4/39.3	4.4	5.3	5.3	5.3	5.3		
42.0			4.9	4.9	4.9	4.9				4.4/40.3	4.9	4.9	4.9	4.9		
44.0			4.6/43.9	4.6	4.6	4.6					4.6	4.6	4.6	4.6		
46.0				4.5/44.9	4.3	4.3					4.3	4.3	4.3	4.3		
48.0					4.0	4.0	3.4/48.1	3.3/48.9			4.2/46.9	4.0/47.9	4.0	4.0		
50.0					3.8	3.8	3.2	3.2					3.8	3.8	3.1/50.1	3.0/50.9
52.0					3.6/51.2	3.5	3.0	3.0					3.5	3.5	2.9	2.9
54.0						3.5/52.2	2.8	2.8					3.3	3.3	2.7	2.7
56.0							2.7	2.7					3.3/54.2	3.1/55.2	2.5	2.5
58.0							2.5	2.5							2.3	2.3
60.0							2.4/58.1	2.3/59.0							2.2	2.2
62.0															2.1/61.0	2.1

作業半径 (m)	タワージブ長さ (m)							
	41.15							
	タワー角度 (°)							
	90		80		70		60	
2本掛	1本掛	2本掛	1本掛	2本掛	1本掛	2本掛	1本掛	
9.2								
10.0								
12.0								
14.0	10.0	10.0/14.4						
15.0	10.0	10.0						
16.0	10.0	10.0						
18.0	10.0	10.0						
20.0	10.0	10.0						
22.0	9.8	9.8						
24.0	9.2	9.2						
26.0	8.6	8.6	8.9/26.2	8.7/26.8				
28.0	8.0	8.0	8.3	8.3				
30.0	7.3	7.3	7.6	7.6				
32.0	6.7	6.7	7.0	7.0				
34.0	6.1	6.1	6.5	6.5				
36.0	5.2	5.2	6.1	6.1				
38.0	4.6	4.6	5.6	5.6	5.3/39.8			
40.0	4.4	4.4	5.3	5.3	5.3	5.2/40.5		
42.0	4.0	4.0	4.9	4.9	4.9	4.9		
44.0	3.8/42.2	3.7/43.2	4.6	4.6	4.6	4.6		
46.0			4.3	4.3	4.3	4.3		
48.0			4.0	4.0	4.0	4.0		
50.0			3.8/49.8	3.8	3.8	3.8		
52.0				3.7/50.8	3.5	3.5	2.7/52.2	2.6/53.0
54.0					3.3	3.3	2.5	2.5
56.0					3.0	3.0	2.3	2.3
58.0					2.9/57.1	2.9	2.2	2.2
60.0						2.8/58.1	2.0	2.0
62.0							1.9	1.9
64.0							1.8/63.0	1.7

# 定格総荷重表

## ■46.95mタワー

(単位：t)

作業半径 (m)	タワージブ長さ (m)															
	22.85 タワー角度 (°)								25.90 タワー角度 (°)							
	90		80		70		60		90		80		70		60	
	2本掛	1本掛	2本掛	1本掛	2本掛	1本掛	2本掛	1本掛	2本掛	1本掛	2本掛	1本掛	2本掛	1本掛	2本掛	1本掛
9.2	17.5	11.0/9.7														
10.0	17.5	11.0							16.0	11.0/10.5						
12.0	17.5	11.0							16.0	11.0						
14.0	17.5	11.0							16.0	11.0						
15.0	17.5	11.0							16.0	11.0						
16.0	16.7	11.0							16.0	11.0						
18.0	14.5	11.0	12.9/19.9						14.4	11.0						
20.0	12.8	11.0	12.8	11.0/20.5					12.7	11.0	12.1/21.0	11.0/21.6				
22.0	11.5	11.0	11.5	11.0					11.4	11.0	11.4	11.0				
24.0	10.4	10.4	10.4	10.4					10.3	10.3	10.3	10.3				
26.0	8.9/24.6	8.9/25.6	9.5	9.5					9.4	9.4	9.4	9.4				
28.0			8.7	8.7					7.7/27.5	7.7	8.6	8.6				
30.0			8.0	8.0	7.7/31.1	7.5/31.8			7.7/28.5	7.9	7.9					
32.0			7.4	7.4	7.4	7.4				7.3	7.3	7.1/32.7	6.9/33.4			
34.0			7.2/32.7	6.9/33.7	6.8	6.8				6.7	6.7	6.7	6.7			
36.0					6.3	6.3				6.4/35.6	6.3	6.3	6.3			
38.0					5.9	5.9					6.2/36.6	5.8	5.8			
40.0					5.4	5.4	4.6/41.5					5.4	5.4			
42.0					5.3/40.5	5.2/41.5	4.5	4.5/42.2				5.0	5.0	4.2/43.5		
44.0							4.3	4.3				4.8/43.5	4.7	4.1	4.1/44.3	
46.0							4.0	4.0					4.6/44.5	3.8	3.8	
48.0							3.8/47.8	3.8						3.6	3.6	
50.0								3.8/48.8						3.4	3.4	
52.0														3.3/50.7	3.3/51.7	

作業半径 (m)	タワージブ長さ (m)															
	28.95 タワー角度 (°)								32.00 タワー角度 (°)							
	90		80		70		60		90		80		70		60	
	2本掛	1本掛	2本掛	1本掛	2本掛	1本掛	2本掛	1本掛	2本掛	1本掛	2本掛	1本掛	2本掛	1本掛	2本掛	1本掛
9.2																
10.0	15.0/10.8	11.0/11.3							14.0/11.6							
12.0	15.0	11.0							14.0	11.0/12.1						
14.0	15.0	11.0							14.0	11.0						
15.0	15.0	11.0							14.0	11.0						
16.0	15.0	11.0							14.0	11.0						
18.0	14.2	11.0							14.0	11.0						
20.0	12.6	11.0							12.5	11.0						
22.0	11.2	11.0	11.1/22.2	10.8/22.7					11.2	11.0	10.5/23.3	10.2/23.9				
24.0	10.2	10.2	10.2	10.2					10.1	10.1	10.1	10.1				
26.0	9.2	9.2	9.2	9.2					9.2	9.2	9.2	9.2				
28.0	8.5	8.5	8.5	8.5					8.4	8.4	8.4	8.4				
30.0	7.4	7.4	7.8	7.8					7.7	7.7	7.7	7.7				
32.0	6.8/30.4	6.8/31.4	7.2	7.2					7.1	7.1	7.1	7.1				
34.0			6.7	6.7	6.6/34.4	6.5/35.0			5.8/33.4	5.8	6.6	6.6				
36.0			6.2	6.2	6.2	6.2				5.8/34.4	6.2	6.2	6.2	6.0/36.7		
38.0			5.8	5.8	5.8	5.8					5.7	5.7	5.7	5.7		
40.0			5.7/38.6	5.5/39.6	5.4	5.4					5.3	5.3	5.3	5.3		
42.0					5.0	5.0					5.1/41.5	5.0	5.0	5.0		
44.0					4.6	4.6	3.7/45.5					4.9/42.5	4.6	4.6		
46.0					4.3	4.3	3.7	3.7/46.3					4.3	4.3	3.4/47.6	
48.0					4.2/46.4	4.1/47.4	3.4	3.4					4.0	4.0	3.3	3.3/48.4
50.0							3.2	3.2					3.9/49.3	3.8	3.1	3.1
52.0							3.0	3.0						3.8/50.3	2.9	2.9
54.0							2.9/53.7	2.9							2.7	2.7
56.0								2.9/54.7							2.5	2.5
58.0															2.5/56.6	2.5/57.6

# 定格総荷重表

(単位: t)

作業半径 (m)	タワージブ長さ (m)															
	35.05								38.10							
	タワー角度 (°)								タワー角度 (°)							
	90		80		70		60		90		80		70		60	
2本掛	1本掛	2本掛	1本掛	2本掛	1本掛	2本掛	1本掛	2本掛	1本掛	2本掛	1本掛	2本掛	1本掛	2本掛	1本掛	
9.2																
10.0																
12.0	12.5/12.4	11.0/12.9							11.0/13.2	11.0/13.6						
14.0	12.5	11.0							11.0	11.0						
15.0	12.5	11.0							11.0	11.0						
16.0	12.5	11.0							11.0	11.0						
18.0	12.5	11.0							11.0	11.0						
20.0	12.4	11.0							11.0	11.0						
22.0	11.1	11.0							11.0	11.0						
24.0	10.0	10.0	9.8/24.5	9.6/25.0					9.9	9.9	9.2/25.6					
26.0	9.1	9.1	9.1	9.1					9.0	9.0	9.0	8.9/26.2				
28.0	8.3	8.3	8.3	8.3					8.3	8.3	8.3	8.3				
30.0	7.7	7.7	7.7	7.7					7.6	7.6	7.6	7.6				
32.0	7.1	7.1	7.1	7.1					7.0	7.0	7.0	7.0				
34.0	6.6	6.6	6.6	6.6					6.5	6.5	6.5	6.5				
36.0	5.4	5.4	6.1	6.1	5.8/37.6				6.1	6.1	6.1	6.1				
38.0	5.1/36.3	5.1/37.3	5.7	5.7	5.7	5.6/38.3			5.5	5.5	5.6	5.6	5.4/39.2	5.3/39.9		
40.0			5.3	5.3	5.3	5.3			4.4/39.3	4.4	5.3	5.3	5.3	5.3		
42.0			4.9	4.9	4.9	4.9			4.4/40.3	4.9	4.9	4.9	4.9	4.9		
44.0			4.6	4.6	4.6	4.6				4.6	4.6	4.6	4.6	4.6		
46.0			4.5/44.5	4.4/45.5	4.3	4.3				4.3	4.3	4.3	4.3	4.3		
48.0					4.0	4.0	2.9/49.6			4.1/47.4	4.0	4.0	4.0	4.0		
50.0					3.8	3.8	2.9	2.9/50.4			4.0/48.4	3.8	3.8	2.5/51.7		
52.0					3.5	3.5	2.7	2.7				3.5	3.5	2.5	2.5/52.4	
54.0					3.5/52.3	3.3/53.3	2.5	2.5				3.3	3.3	2.3	2.3	
56.0							2.3	2.3				3.1/55.2	3.0	2.2	2.2	
58.0							2.2	2.2					3.0/56.2	2.0	2.0	
60.0							2.0/59.6	2.0						1.8	1.8	
62.0								2.0/60.6						1.7	1.7	
64.0														1.7/62.5	1.7/63.5	

作業半径 (m)	タワージブ長さ (m)											
	41.15						44.20					
	タワー角度 (°)						タワー角度 (°)					
	90		80		70		90		80		70	
2本掛	1本掛	2本掛	1本掛	2本掛	1本掛	2本掛	1本掛	2本掛	1本掛	2本掛	1本掛	
9.2												
10.0												
12.0												
14.0	10.0	10.0/14.4					8.0/14.7					
15.0	10.0	10.0					8.0	8.0/15.2				
16.0	10.0	10.0					8.0	8.0				
18.0	10.0	10.0					8.0	8.0				
20.0	10.0	10.0					8.0	8.0				
22.0	9.8	9.8					8.0	8.0				
24.0	9.2	9.2					8.0	8.0				
26.0	8.6	8.6	8.8/26.7	8.5/27.3			7.4	7.4	8.0/27.9			
28.0	8.0	8.0	8.3	8.3			6.7	6.7	8.0	8.0/28.5		
30.0	7.3	7.3	7.6	7.6			6.1	6.1	7.6	7.6		
32.0	6.7	6.7	7.0	7.0			5.6	5.6	7.0	7.0		
34.0	6.1	6.1	6.5	6.5			5.2	5.2	6.5	6.5		
36.0	5.2	5.2	6.1	6.1			4.9	4.9	6.0	6.0		
38.0	4.6	4.6	5.6	5.6			4.6	4.6	5.6	5.6		
40.0	4.4	4.4	5.3	5.3	5.1/40.8	5.0/41.5	4.4	4.4	5.2	5.2		
42.0	4.0	4.0	4.9	4.9	4.9	4.9	4.2	4.2	4.9	4.9	4.7/42.4	4.6/43.1
44.0	3.8/42.2	3.7/43.2	4.6	4.6	4.6	4.6	3.8	3.8	4.6	4.6	4.4	4.4
46.0			4.3	4.3	4.3	4.3	3.3/45.2	3.3	4.3	4.3	4.1	4.1
48.0			4.0	4.0	4.0	4.0		3.1/46.2	4.0	4.0	3.9	3.9
50.0			3.8	3.8	3.8	3.8			3.7	3.7	3.6	3.6
52.0			3.7/50.4	3.6/51.3	3.5	3.5			3.5	3.5	3.4	3.4
54.0					3.3	3.3			3.4/53.3	3.3	3.2	3.2
56.0					3.0	3.0				3.3/54.3	3.0	3.0
58.0					2.9	2.9					2.8	2.8
60.0					2.9/58.2	2.7/59.2					2.6	2.6
62.0											2.5/61.1	2.4
64.0												2.4/62.1

# 定格総荷重表

(単位: t)

作業半径 (m)	タワージブ長さ (m)											
	35.05						38.10					
	タワー角度 (°)						タワー角度 (°)					
	90		80		70		90		80		70	
2本掛	1本掛	2本掛	1本掛	2本掛	1本掛	2本掛	1本掛	2本掛	1本掛	2本掛	1本掛	
9.2												
10.0												
12.0	12.5/12.4	11.0/12.9					11.0/13.2	11.0/13.6				
14.0	12.5	11.0					11.0	11.0				
15.0	12.5	11.0					11.0	11.0				
16.0	12.5	11.0					11.0	11.0				
18.0	12.5	11.0					11.0	11.0				
20.0	12.4	11.0					11.0	11.0				
22.0	11.1	11.0					11.0	11.0				
24.0	10.0	10.0	9.6/25.0	9.3/25.6			9.9	9.9				
26.0	9.1	9.1	9.1	9.1			9.0	9.0	9.0/26.1	8.8/26.7		
28.0	8.3	8.3	8.3	8.3			8.3	8.3	8.3	8.3		
30.0	7.7	7.7	7.7	7.7			7.6	7.6	7.6	7.6		
32.0	7.1	7.1	7.1	7.1			7.0	7.0	7.0	7.0		
34.0	6.6	6.6	6.6	6.6			6.5	6.5	6.5	6.5		
36.0	5.4	5.4	6.1	6.1			6.1	6.1	6.1	6.1		
38.0	5.1/36.3	5.1/37.3	5.7	5.7	5.5/38.6	5.4/39.3	5.5	5.5	5.6	5.6		
40.0			5.3	5.3	5.2	5.2	4.4/39.3	4.4	5.3	5.3	5.1/40.2	5.0/40.9
42.0			4.9	4.9	4.9	4.9		4.4/40.3	4.9	4.9	4.8	4.8
44.0			4.6	4.6	4.5	4.5			4.6	4.6	4.4	4.4
46.0			4.5/45.0	4.3	4.3	4.3			4.3	4.3	4.1	4.1
48.0					4.0	4.0			4.0/47.9	4.0	3.9	3.9
50.0					3.8	3.8				3.9/48.9	3.6	3.6
52.0					3.5	3.5					3.4	3.4
54.0					3.3/53.3	3.3					3.2	3.2
56.0						3.3/54.3					3.0	3.0
58.0											3.0/56.3	3.0/57.3

作業半径 (m)	タワージブ長さ (m)											
	41.15						44.20					
	タワー角度 (°)						タワー角度 (°)					
	90		80		70		90		80		70	
2本掛	1本掛	2本掛	1本掛	2本掛	1本掛	2本掛	1本掛	2本掛	1本掛	2本掛	1本掛	
9.2												
10.0												
12.0												
14.0	9.5	9.5/14.4					8.0/14.7					
15.0	9.5	9.5					8.0	8.0/15.2				
16.0	9.5	9.5					8.0	8.0				
18.0	9.5	9.5					8.0	8.0				
20.0	9.5	9.5					8.0	8.0				
22.0	9.0	9.0					8.0	8.0				
24.0	8.1	8.1					8.0	8.0				
26.0	7.4	7.4	8.5/27.3	8.3/27.8			7.4	7.4				
28.0	6.7	6.7	8.2	8.2			6.7	6.7	7.9/28.4	7.8/29.0		
30.0	6.1	6.1	7.6	7.6			6.1	6.1	7.5	7.5		
32.0	5.6	5.6	7.0	7.0			5.6	5.6	6.9	6.9		
34.0	5.2	5.2	6.5	6.5			5.2	5.2	6.4	6.4		
36.0	4.9	4.9	6.0	6.0			4.9	4.9	5.9	5.9		
38.0	4.6	4.6	5.6	5.6			4.6	4.6	5.5	5.5		
40.0	4.4	4.4	5.2	5.2	4.7/41.9		4.4	4.4	5.1	5.1		
42.0	4.0	4.0	4.9	4.9	4.6	4.6/42.5	4.2	4.2	4.8	4.8	4.2/43.5	
44.0	3.8/42.2	3.7/43.2	4.6	4.6	4.3	4.3	3.8	3.8	4.5	4.5	4.2	4.2/44.2
46.0			4.3	4.3	4.0	4.0	3.4/45.2	3.3	4.2	4.2	3.9	3.9
48.0			4.0	4.0	3.8	3.8		3.1/46.2	3.9	3.9	3.6	3.6
50.0			3.7	3.7	3.5	3.5			3.6	3.6	3.4	3.4
52.0			3.6/50.9	3.5/51.9	3.3	3.3			3.4	3.4	3.2	3.2
54.0					3.1	3.1			3.1/53.8	3.1	3.0	3.0
56.0					2.9	2.9				3.0/54.8	2.8	2.8
58.0					2.7	2.7					2.6	2.6
60.0					2.6/59.2	2.5					2.4	2.4
62.0						2.5/60.2					2.2	2.2
64.0											2.2/62.2	2.2/63.2